

HydraLink CONTROL IoT

Internet of Things “Link” to the Water/Wastewater industry

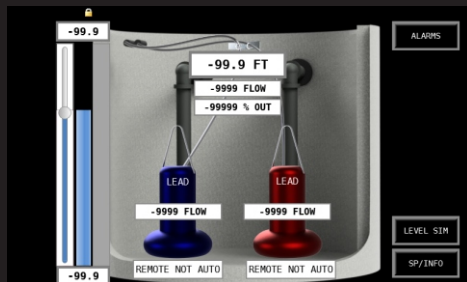
14 Digital Inputs
8 Digital Outputs
2 Analog Inputs
2 Temperature Inputs
2 Analog Outputs



Remote Mounted
- 5" or 7" HMI
or Virtual HMI



Ethernet Port
Serial Port



- Duplex / Triplex
- HMI - Grey Scale, Submersible, S&L
- HydraLink, MODBUS TCP, Stand-Alone
- Constant or Variable Speed
- No programming required for any configuration; every setpoint is available to operators (access allowed)



- Compatible with ALL carrier networks
- Cost effective, fast, and secure
- Report by exception and polling options
- Use any: M2M Modem, HMI Platform, communication server (local or cloud)
- Automatic cellular network fail-over available



Manufactured by:
HYDRA SERVICE, INC.
250 SPRINGVIEW COMMERCE DR. - DEBARY, FLORIDA 32713
800-323-1731

Site to Site Communications

- Onsite Configurable
- Alarm triggered or level
- Unlimited receiving sites
- Valve, Station Cut, Flow Control

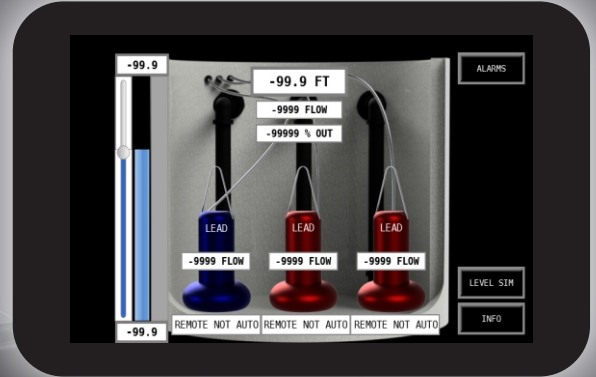
HydraLink Communications

- ANY cell carrier (IOT provisioning)
- Unlimited Remote Sites
- Layers of security (configurable)
- IoT platform (open design)
- LAN/WAN connectivity
- Real-Time updates for any alarm or status change (configurable)
- Real-Time updates for any setpoint change (HMI or Controller triggered), confirmation at HMI
- Once a day updates for reporting (totalizers and yesterday's info)
- User selectable heartbeat update

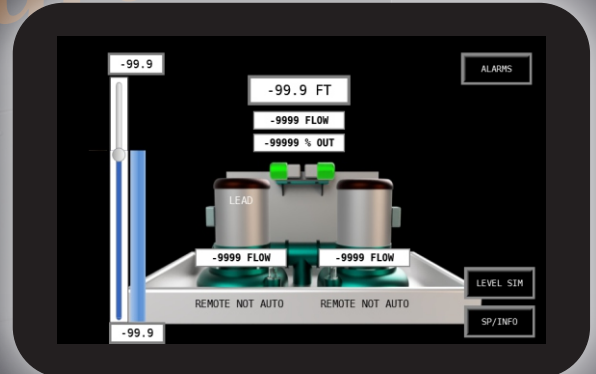
Controller Features

- Duplex / Triplex Operation
- Alternation (Auto or Fixed)
- Software Off/Auto (local and remote)
- Pump Cut Function
- Level Simulator
- Volumetric Flow (Lag calculation)
- Scaled IEEE staff gauge (wetwell overall level, offset from bottom, and invert). Values sent to HMI to mimic
- RTM, Counter, and Vacuum Pump if utilizing the S&L type station
- HELP function on configuration screens

SUBMERSIBLE TRIPLEX



SMITH & LOVELESS DUPLEX



GREY SCALE

